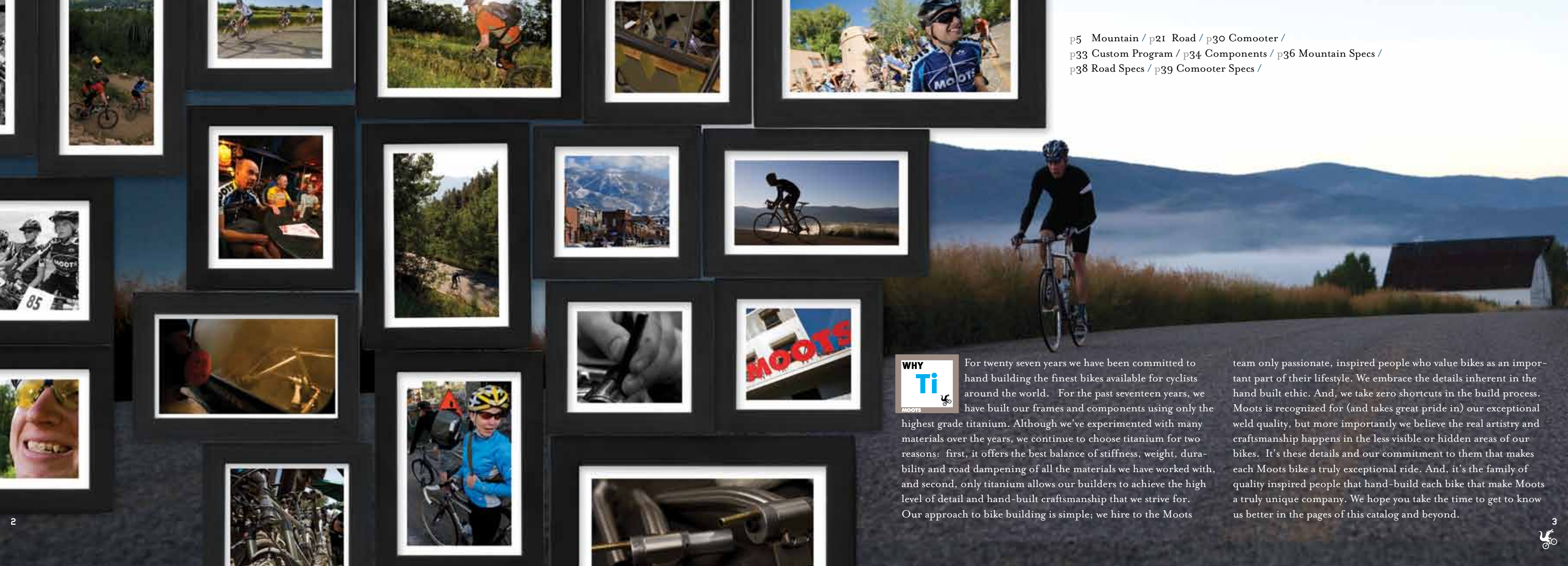




mate 2009

proctor





p5 Mountain / p21 Road / p30 Comooter /
p33 Custom Program / p34 Components / p36 Mountain Specs /
p38 Road Specs / p39 Comooter Specs /



For twenty seven years we have been committed to hand building the finest bikes available for cyclists around the world. For the past seventeen years, we have built our frames and components using only the highest grade titanium. Although we've experimented with many materials over the years, we continue to choose titanium for two reasons: first, it offers the best balance of stiffness, weight, durability and road dampening of all the materials we have worked with, and second, only titanium allows our builders to achieve the high level of detail and hand-built craftsmanship that we strive for. Our approach to bike building is simple; we hire to the Moots

team only passionate, inspired people who value bikes as an important part of their lifestyle. We embrace the details inherent in the hand built ethic. And, we take zero shortcuts in the build process. Moots is recognized for (and takes great pride in) our exceptional weld quality, but more importantly we believe the real artistry and craftsmanship happens in the less visible or hidden areas of our bikes. It's these details and our commitment to them that makes each Moots bike a truly exceptional ride. And, it's the family of quality inspired people that hand-build each bike that make Moots a truly unique company. We hope you take the time to get to know us better in the pages of this catalog and beyond.



Mountain



MOOTO XZ ^{29"}
4" plush travel



MOOTO X YBB^{29"}
Soft-tail 29er



MOOTO X RIGOR^{29"}
Snappy hardtail 29er or Monstercross



GRISTLE ^{9X6er NEW}
Tasty 29"/26" combo



CINCO ^{26"}
All mountain fun, 5" travel



ZIRKEL ^{26"} *updated*
XC, Now with 4" of MARC suspension



YBB 26"
Classic racing rig with The original soft tail



RIGORMOOTIS 26"
No compromises, wicked fast XC





Extremely durable with a very high strength-to-weight ratio. Beat it up as much as you can. It will not catastrophically fail like other bike materials.

Mountain MOOTO XZ

Our new favorite, the MXz devours bumps and ledges, provides great traction on steep technical climbs and offers superb control. This beautiful beast handles terrain as varied as steep switchbacks, sweeper turns and boulder strewn fall line gullies with ease. Very comfortable for long rides and big mileage days, the bombproof titanium front triangle works in perfect harmony with the efficient and responsive MARC suspension aluminum rear. Just plain big fun!



4" MARC SUSPENSION: Moots designed 4" suspension removes the small pivot at dropout to minimize flex. Set up with a Fox RP 23 shock to prevent pedal bob while remaining very active under pedal pressure.





Mountain MOOTO X YBB

"This bike is a smooth rocket ship in the single-track; the bike comes alive underneath me, soaks up the bumps like a full suspension bike but still puts the power to the ground like a hard tail. It excels in the technical sections; climbs like a goat, the big wheels hook up on the corners and they float down the hills. I only wish I had bought this bike sooner! I really like the simple pivotless suspension and the frame is a work of art, incredible welds, tough as nails, no chipping paint. Moots really nailed it with this bike."

- Matt G., Lincoln, VT



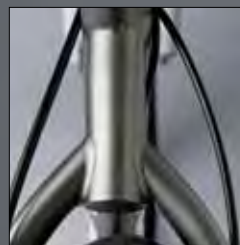
YBB SUSPENSION UNIT: Light-weight race suspension provides 1 1/8" travel, no air, no pump, easy maintenance!





Mountain MOOTO X RIGOR

When we introduced our Mooto X line of 29" mountain bikes over 9 years ago we were one of the first companies to offer a full line of big wheel bikes. What was true then about these big rigs is even more apparent today; big wheels equal big fun! Paired with the lively Moots titanium frame and custom tuned geometry these larger wheels provide a great degree of comfort over the roughest terrain, as Moots Owner Michael J. of CA will attest; "The rolling ability of the 29" wheels and the suppleness of the titanium frame material allows me to stay seated through bumpy, rocky conditions and launch up long technical trails and jeep roads."



MONOSTAY REAR END: Light, strong and stiff for enhanced power transfer





Mountain ^{NEW} GRISTLE

Hey, someone put chocolate in my peanut butter! Sure you may get some funny looks sporting a 26" rear wheel with a 29" front wheel, but the proof is in the performance. The large front wheel provides all the advantages of a regular 29er, easily rolling over obstacles and hooking up nicely under hard cornering while the smaller, stiffer 26" rear is quick to accelerate to top speed. Who said you can't have your cake and eat it too? Hungry yet?

AVAILABLE IN THREE OPTIONS:
Gristle Z with 4" rear travel
Gristle YBB
Gristle Rigor



DOWNTUBE Ti SHOCK MOUNT:
Lighter weight, leaves mounting space for any front derailleur and includes Fox hardware as standard



Demands a superior build quality. All welding performed in an oxygen free environment. Experience, superior skills and attention to detail along every step of the way are essential to properly build a Moots.





Mountain CINCO

"After nearly 25 years of riding mountain bikes the Cinco is hands down the best bike I've ridden. As an all around, do everything mountain bike, this is it ... It's fast, light, solid and very stable. It's comfortable on long day rides, climbs and descends extremely well. The Cinco "felt right" from the first time I climbed on it. My confidence on descents has gone up as well as cleaning sections of technical climbs that I would have fumbled on in the past. You can and would expect 5 "of dreamy float on the downhills but what I wasn't expecting was a 5" travel bike that doesn't bob when you lock the front shock, put the RP-23 in pro-pedal and yes, pedal out of the saddle with little or no bob!"

-Dennis L., SLO, CA



OVERSIZE, THIN WALL MAIN TRI-ANGLE: Extremely wide combination of tubing diameters and wall thicknesses allow for complete customized tuning of each frame size and design.

MARK RASMUSSEN

"I am a professional trumpet player, teacher, instrument technician, Dad and Moots welder." To me, working on instruments and building bikes are both an expression of form following function wrapped in aesthetic beauty; the balance of all three being the ultimate goal. Music, to me, is the pursuit of perfection in the moment. And somehow they all connect. None of these things work well without putting your heart and soul into them. What would be the point? And there is the joy of it. Anything worth doing is worth doing well.





Mountain ZIRKEL

Newly redesigned for 2009 the Zirkel has been up-graded to 4" of smooth bump-eating Moots proprietary MARC suspension. This model just keeps getting better and better! We race 'em on rough, technical courses, go big on backcountry excursions and sneak out for lunch time laps on nearby Emerald Mountain. Our best all around XC bike! Strong, efficient, supple and wicked fast!



REPLACEABLE DERAILLEUR HANGER: All Moots models feature an easily replaceable precision manufactured derailleur hanger in case of crash damage.



Mountain YBB

Mountain Bikings original softail. Ridden to multiple national titles this legendary high performance cross country race machine takes full advantage of the extremely long fatigue life of Moots titanium by flexing the pivotless chainstays to provide 1 1/8" of chatter-bump eating travel. Coupled with the inherent vibration damping nature of the front triangle the YBB provides a fast, comfortable ride while remaining light weight, efficient and very simple to maintain.



HEADBADGE: Hand painted cast pewter head badge. We extend our attention to detail to all parts of each and every bike.





Mountain RIGORMOOTIS

THE ultimate titanium race bike. Nothing better supports the less is more theory. Way more! Tried and true this geometry is spot on and the 3/2.5 titanium frame takes the edge off in the rough stuff while efficiently transferring power under load. It may look like a piece of art but we designed it to be treated rough and ridden hard. Try that with your Van Gogh!



SLIDER DROP OUTS: Lighter, better holding power and easier adjusting than EBB.



Longest fatigue life of any high end bike material. Titanium will provide you with the same amazing ride quality after ten years as it did its very first ride. And, it can be refurbished to look like new without compromise to the frame's integrity.





Road, Cross, Commute



VAMoots
Our classic road warrior



COMPACT
Race inspired sloping TT



updated PSYCHLO X RIGOR /
PSYCHLO X YBB
Hurt in the dirt



MOOTOIR *now in stock sizes*
For the long haul



COMOOTER *new*
Available in Spring 2009. Moots performance
and beauty for the daily commute





Silky yet stiff. Titanium offers the best balance of weight, strength, stiffness, vibration dampening and durability which results in the highest quality ride.



Road VAMOOTs

"The materials and design combine to provide a ride that is supple yet responsive, lightweight yet strong. Built to last, built to be beautiful, built to be admired, built to be ridden. When I step, it goes. When I lean, it carves. Uphill, downhill, smooth pavement to cobbles and bumpy roads- this machine inspires me." Mike H. We couldn't say it better ourselves Mike.



WELDS: A meticulous multi-step welding and finish process headlined by our signature double pass welds and also including fully deburring all tubes, perfectly chasing and facing head tubes and bottom brackets, and precisely aligning each frame within .005" for ease of build-out and the perfect ride.



Road COMPACT

Seated or out of the saddle the Moots Compact will surpass your every expectation with its smooth ride yet snappy acceleration. The compact front triangle results in a stiffer frame that climbs like a rocket, sprints like a cheetah and begs to be raced, all while having the same dreamy handling characteristics as our classic Vamoots. It looks fast sitting still but that pales in comparison to how it feels once you're aboard. Hang on!



BREEZER STYLE DROP OUTS:
Extra-wide flange dropout keeps the rear triangle laterally stiff and ultra responsive for excellent power transfer to the rear wheel.



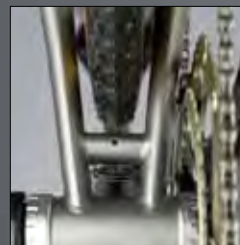
AMY DECASTRO

"Nearly twenty years have passed since I first played with my Easy Bake Oven. The wonder of fat and sugar trapping air, the eggs and gluten stabilizing as heat expands the air bubbles, never left me. I carried it through grade school, culinary school and ultimately into the profession of designing and making wedding cakes. After several years of endless cake tastings, it was time for a healthier work environment. Fortunately, I was lucky to get hired by Moots. In time I achieved my goal of becoming a Moots welder. Welding has kindled a curiosity in me similar to baking. The science exists in both as do the necessary skills of a steady hand, patience and persistence. And though I still make cakes on the weekends (and for every Moots birthday) welding has become a passion equally as important to me as was my Easy Bake oven so many years ago."



Road ^{updated} PSYCHLO X RIGOR PSYCHLO X YBB

A cross bike shouldn't feel this good. For that matter cyclocross shouldn't really be fun at all. It's cold, sleeting, there's mud in your eyes, cowbells are clanging and your heart rate went right past your theoretical maximum two laps ago, yet you still want more. The Psychlo X feels your pain. Light, wicked fast and right at home in heinous conditions our Psychlo X is ready for all that 'cross can dish up. Are you?



NEW FORMED CHAINSTAYS:
Formed chain stay increases crank clearance and allows for use of Shimano cranks with 43.5 mm chain line.





Our bikes epitomize hand built. The frames are durable works of art and the perfect build can only be accomplished by the most skilled and experienced craftspeople.

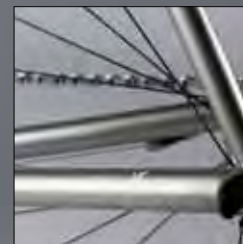


now in stock sizes

Road MOOTOUR

This classic sport-tourer is the do-it-all master, equally at home on evening training rides as on a credit card tour across Italy's finest wine regions. Chip seal, dirt roads or varied terrain, through it all the long 43 cm chainstays deliver great stability and comfort for the long haul. Equipped with stock rack and fender eyelets, the Mootour is ready for any wet weather commute, long charity ride or your favorite dirt road loop.

The Mootour is also popular with our S&S couplers which will provide you years of easy travel with your Moots.



OVERSIZED CONTINUOUS DIAMETER CHAINSTAYS: Our proprietary use of thin walled tubing works in harmony with the front triangle to resist lateral flex for quick acceleration and a uniquely stable ride.



COMOOTER NEW

NEW for Spring 2009* we introduce our small contribution to the pollution solution, the Moots Comooter. Commuting even part of the time is good for the heart, good for the soul and a great step towards a better world. As cool as many are not all commuter bikes need to be assembled from old frames and mismatched parts. Although our Comooter is a two wheeled beauty the bike is purely performance based, with a no-corners-cut build kit featuring an internal 14 speed Rohloff drive train and front and rear generator light system. Crafted with all the dreamy ride characteristics of the rest of our Moots lineup this bike has it all! Take the scenic route but remember, you're supposed to be going to the office!

*The Comooter is offered as a complete bike only. See Build kit page 31



For Complete Comooter Specs, See Page 39

THE COMOOTER BUILD KIT *Slider drop outs *Rohloff routing

Fork: Wound Up Cross, disc specific, eyelets

Head set: Chris King 1 1/8" No Thread Set

Stem: Moots Open Road, custom face plate for light mount.

Post: Moots Cinch 27.2

Saddle: Brooks Swallow, black leather

Bars: Moots Ti flat bars with 8" sweep

Crank: Campy Chorus Carbon, single 38T ring

Brakes: Magura Louise 160mm rotors.

Front Hub: Schmidt Generator Hub, disc

Rear Hub: Rohloff Internal 14 speeds

Rims: DT Swiss x470, 32 hole front & rear

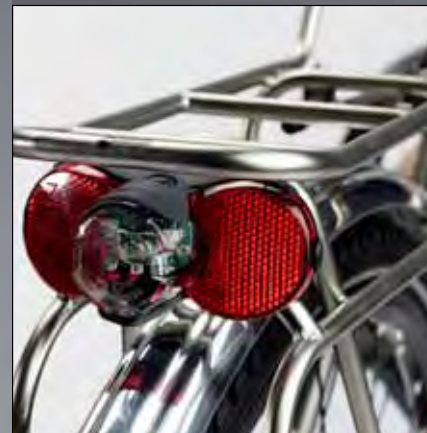
Tires: Schwalbe 38c Marathon, reflective sidewall, belted tread

Fenders: Honjo polished aluminum, full coverage

Lights: Schmidt EG front light

Busch & Muller Dtoplight XS Senso (rack mounted)

Rear Rack: Tubus Cosmo





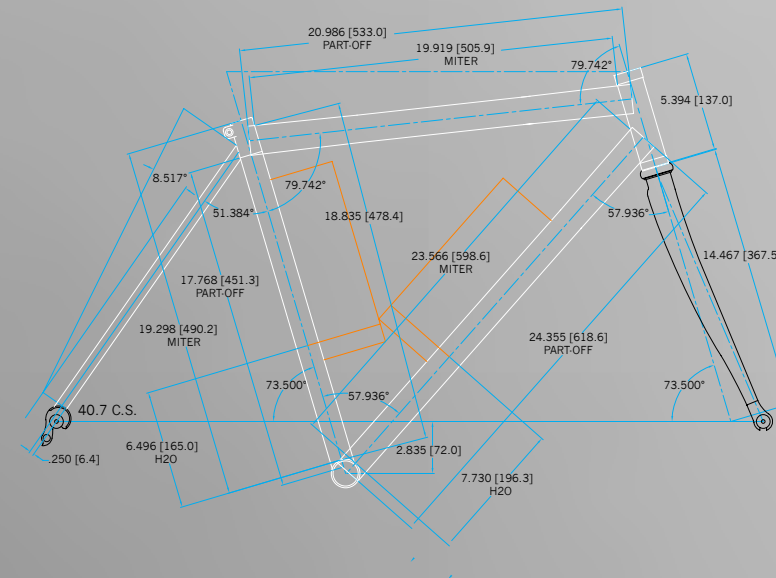
Steamboat Springs Winter Sports Club (SSWC)

The Steamboat Springs Winter Sports Club was founded in 1914 and is largely responsible for Steamboat having sent more athletes to the Winter Olympics than any other community in North America! We have had the pleasure over the past several years of supporting the Winter Sports Club. A few years ago a rigorous summer program was put in place to give these young athletes a structured offseason training and racing program based on road and mountain biking. Since then the cycling team has achieved great results including several US national champions and multiple state champions. The most rewarding part has been seeing these outstanding young athletes having fun riding bikes, improving their skills, increasing their confidence and giving back to the local community. To that end, part of the program involves working with the local trail advocacy group to improve the trails we all ride and race on. These athletes are learning how to train, how to race and most importantly what it means to represent one of the greatest sports towns in the country. We are proud to be part of their organization. For more information please visit www.sswsc.org



CUSTOM PROGRAM

Since 1981 we've been handcrafting the highest quality custom fit bicycles for discerning riders across the globe. The wealth of experience gained over the years has led to the development of our current lineup of stock sizes for road, mountain and cross bikes. As a result many in the industry consider our extensive stock sizing to be on par with other companies custom programs. Even with our broad range of carefully developed stock sizes we recognize that there are times when a custom designed bicycle is the best fit for a particular riders needs. Every Moots model in this catalog is available as a custom design to reflect your specific fit or performance requirements. We love designing custom bicycles so please do not hesitate to contact your local Moots Dealer and start creating your dream bike. To learn more about the custom program and our step-by-step guide, please visit www.moots.com or your preferred specialty bike dealer.

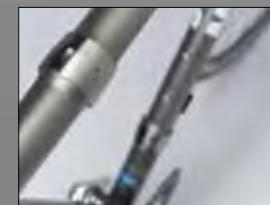


MOOTS OPTIONS



ROHLOFF

We can customize any of our full titanium mountain frames to work with the Rohloff Speedhub, a 14 speed internal hub that stores all the delicate shifting mechanism inside of the sturdy hub body. The Rohloff system is great for all weather riding and allows for a similar gear ratio as traditional derailleur systems.



S&S COUPLER

Couplers allow the bike to be broken down and easily packed into our 26" x 26" x 10" hardsided suitcase that avoids airlines oversized baggage fees and fits into smaller spaces than a traditional bike box. Travellers who want to bring their Moots along will find the couplers quickly pay for themselves in saved charges.

SLIDER DROPOUTS

One of our most popular options, the Moots Slider dropouts are available on several of our full titanium mountain models and our Psychlo X. The Slider dropouts are a solid, lightweight and easy-to-use option for running single speed without the need for a tensioner while still allowing use of gears, if desired.



OTHER POPULAR ADD-ONS

Rack eyerits, vendor mounts, third h20 mounts, pump peg and chain hanger.



Components

When it comes to bicycle components, performance and durability are the two essential ingredients in crafting a quality product. Moots takes this a step further and adds superior strength to weight ratios. Every Moots component we hand build incorporates only the highest grade 3/2.5 titanium available. Each stem, handle bar and seat post goes through the same meticulous, no compromise manufacturing process as our frames. From the in house CNC machined binders to the flawless miters and welds, we believe each Moots component you purchase should provide you with years of worry-free high performance.



OPEN TRAIL
New to the Moots family, say hello to the Open Trail mountain stem! Born from the popularity of our Open Road stem we are proud to introduce for 2009 the Open Trail mountain stem offering unsurpassed stiffness for aggressive mountain riding. The Open Trail mountain stem features a newly designed four bolt 31.8 faceplate and bi-ovalized tubing for lasting durability and endless performance.

WEIGHT: 90 x 6 157 grams. SIZES: 90 x + 6, 100 x + 6, 110 x + 6, 120 x + 6, 130 x + 10.
Available in 5 stock sizes as well as custom.



OPEN ROAD
Our Open Road Stem sets the standard for all titanium road stems on the market today. Our large diameter bi-ovalized extension and four bolt machined aluminum face plate creates a rigid, yet compliant masterpiece. Available in 10 stock sizes, with option for custom, this stem has a 45mm clamp length and is compatible with oversized 31.8 handlebars.

WEIGHT: 90 x -6 156 grams, 120x6 171 grams. SIZES: 90 x - 6, 100 x - 6, 110 x - 6, 120 x - 6, 90 x 0, 100 x 0, 110 x 0, 120 x 0, 130 x 0, 130 x 10.



TI BEAM
Elegant and lightweight our Ti Beam Mountain stem stands alone in the bike component industry. Utilizing an ovalized 1-1/2" diameter extension for increased strength and torsional stiffness, each stem is masterfully crafted and welded to perfection. Equipped with a two bolt removable CNC machined aluminum face plate and 50mm steer clamp length, this beautiful stem comes in 5 stock sizes to go along with its 25.4mm clamp size. Custom sizing is also available.
WEIGHT: 90 x 6 164 grams, 120 x 6 178 grams. SIZES: 90 x 6, 100 x 6, 110 x 6, 120 x 6, 130 x 10
50mm steerer clamp height, custom sizing options available.



SEAT POST
Finally a performance titanium seat post that is easy to use. Pick your flavor, Straight or Lay Back and round your frame off with one of the most advanced titanium seat posts on the market. Each Moots Cinch post is carefully tacked, welded, finished and assembled with the same care and quality that goes into every one of our products. Innovative features like our dual independent Allen adjustment creates the simplest post to use, and when combined with our CNC machined Ti head, provides an extraordinary strength to weight ratio. The Cinch delivers a smooth and comfortable ride whether hammering down rocky single-track or logging big miles on the road. Each post comes in three stock lengths and is available in 27.2 mm and 30.9 mm diameters. Lay Back model has a 16mm offset. WEIGHT: 27.2 Cinch: 340 Lay back 192 grams. 30.9 Cinch: 380 Straight 237 grams



Moots Cycling gear and accessories.

Be sure to visit www.moots.com to see our stylish new line of apparel including team race jerseys, wool jerseys, mountain bike jersey, arm/knee warmers, premium socks, caps, hats, great tees and many more Moots accessories.



HANDLE BAR
Complete your new Moots build or add this vibration absorbing beauty to any frame. Each tube is hand selected, cut to its proper length and hand shaped to uniform perfection. With four stock sizes and two choices of sweep, this bar is a must for anyone seeking a lightweight, performance oriented bar. Stock widths from 22" to 25" with 5 or 8 degrees of sweep. Bars will shim up to 25.4 diameter. Custom bars available up to 28" wide and 14 degrees of bend. WEIGHT: 23 x 5 178 grams



TI-HEADSET SPACERS
Lipstick on a pig for some bikes but an absolute necessity to finish off a Moots or other high end bike build. Super light and strong, finished in matching titanium satin bead blast. Available in 5, 10 and 20mm lengths as well as custom lengths. All spacers are 1 1/8" diameter. WEIGHT: 10 mm 6 grams



TAILGATOR
A must for any rider seeking a lightweight performance rack pack. With 400 cubic inches of storage and a carrying capacity of 5 lbs. (on a Moots seat post) this carrying system provides ample room to store all your gear. The custom made Tailgator bags come with a durable Hypalon bottom for added abrasion resistance and securely attaches to our unique low profile titanium rack. Each component comes with a two year limited warranty. WEIGHT: Rack + one shim 125 grams
Complete system 275 grams



Mountain

MOOTO X2 29"									
FRAME SIZE [IN]	EFFECTIVE TOP TUBE [IN]	SEAT TUBE /c-t/ [IN]	HEAD TUBE LENGTH [CM]	HEAD ANGLE	SEAT ANGLE	BB HEIGHT [IN]	CHAIN STAY LENGTH [IN]	STAND OVER [IN]	FORK TRAVEL
16.5	22.7	16.5	9.2	71.25	74.5	12.9	18.2	29.1	100mm
18	23.3	18	10	72	74.25	12.9	18.2	31.1	100mm
19	23.8	19	10	72	74	13	18.2	31.5	100mm
20	24.5	20	11	72.25	73.75	13	18.2	32.8	100mm
22	25.25	21	11.7	72.25	73.5	13.1	18.2	33.7	100mm

MOOTO X YBB + RIGOR 29"									
FRAME SIZE [IN]	EFFECTIVE TOP TUBE [IN]	SEAT TUBE /c-t/ [IN]	HEAD TUBE LENGTH [CM]	HEAD ANGLE	SEAT ANGLE	BB HEIGHT [IN]	CHAIN STAY LENGTH [IN]	STAND OVER [IN]	FORK TRAVEL
17	22.5	17	10	71.25	74.2	11.88	17.6	29.3	80mm
18	23	17.5/ybb 19.5	10.4	71.5	74	11.88	17.6	29.5	80mm
19	23.5	19.5	11	71.5	73.8	12	17.6	30.5	80mm
20	24.25	20	11.7	71.75	73.7	12	17.6	31.5	80mm
22	25	22	12.8	72	73.7	12	17.6	33	80mm

GRISTLE 2 96€									
FRAME SIZE [IN]	EFFECTIVE TOP TUBE [IN]	SEAT TUBE /c-t/ [IN]	HEAD TUBE LENGTH [CM]	HEAD ANGLE	SEAT ANGLE	BB HEIGHT [IN]	CHAIN STAY LENGTH [IN]	STAND OVER [IN]	FORK TRAVEL
16.5	22.5	16	9.2	71.25	74	12.8	16.8	28.7	100mm
18	23.2	18	10	72	73.8	12.8	16.8	31.3	100mm
19	23.6	19	10	72	73.7	12.8	16.8	31.3	100mm
20	24.3	20	11	72.25	73.6	12.9	16.8	33.1	100mm
22	25	21	11.7	72.25	73.5	12.9	16.8	33.9	100mm

GRISTLE YBB + RIGOR 96€									
FRAME SIZE [IN]	EFFECTIVE TOP TUBE [IN]	SEAT TUBE /c-t/ [IN]	HEAD TUBE LENGTH [CM]	HEAD ANGLE	SEAT ANGLE	BB HEIGHT [IN]	CHAIN STAY LENGTH [IN]	STAND OVER [IN]	FORK TRAVEL
16.5	22.5	16.5	9.2	71.25	74	11.88	16.8	28.4	100mm
18	23	18.5	10	71.5	73.75	11.88	16.8	30.8	100mm
19	23.5	19	10	71.5	73.75	12	16.8	31.1	100mm
20	24.25	20	11	71.75	73.5	12.13	16.8	32.1	100mm
22	25	21	11.7	72	73	12.13	16.8	32.8	100mm

ADDITIONAL BICYCLE INFO VISIT : WWW.MOOTS.COM



Mountain

CINCO 26"									
FRAME SIZE [IN]	EFFECTIVE TOP TUBE [IN]	SEAT TUBE /c-t/ [IN]	HEAD TUBE LENGTH [CM]	HEAD ANGLE	SEAT ANGLE	BB HEIGHT [IN]	CHAIN STAY LENGTH [IN]	STAND OVER [IN]	FORK TRAVEL
15	21.9	14.5	10.4	70.4	74.2	13.1	16.85	29.3	120-140mm
16.5	22.5	16	10.4	70.6	74	13.2	16.85	31	120-140mm
18	23.25	17.5	11	71	73.8	13.25	16.85	31.1	120-140mm
19.5	24	19	11.7	71	73.7	13.25	16.85	32.2	120-140mm
21	24.75	20.5	14	71.25	73.6	13.3	16.85	33.4	120-140mm

ZIRKEL 4" 26"									
FRAME SIZE [IN]	EFFECTIVE TOP TUBE [IN]	SEAT TUBE /c-t/ [IN]	HEAD TUBE LENGTH [CM]	HEAD ANGLE	SEAT ANGLE	BB HEIGHT [IN]	CHAIN STAY LENGTH [IN]	STAND OVER [IN]	FORK TRAVEL
14	21.3	15	10.2	70.4	74.1	12.7	16.8	27.6	100-120mm
16	22.2	16	10.5	70.4	74	12.7	16.8	28.3	100-120mm
17	22.6	17	11	70.8	73.9	12.8	16.8	30.2	100-120mm
18	23.2	18	11.7	70.8	73.8	12.8	16.8	31	100-120mm
19	23.6	19	12.8	71	73.7	12.8	16.8	31.7	100-120mm
20	24.3	20	14.6	71.3	73.6	12.9	16.8	32.8	100-120mm
22	25	21	17.1	71.5	73.5	12.9	16.8	33.7	100-120mm

YBB + RIGORMOOTIS 26"									
FRAME SIZE [IN]	EFFECTIVE TOP TUBE [IN]	SEAT TUBE /c-t/ [IN]	HEAD TUBE LENGTH [CM]	HEAD ANGLE	SEAT ANGLE	BB HEIGHT [IN]	CHAIN STAY LENGTH [IN]	STAND OVER [IN]	FORK TRAVEL
12	20.5	16.9 ybb/14 rig	10	70.3	74	11.63	16.8	25.5	80mm
14	21.25	16.9	10	70.5	73.8	11.75	16.8	27.1	80mm
16	22	17.3	10.4	70.8	73.5	11.75	16.8	28.2	80mm
17	22.5	18.4	10.4	71	73.3	11.88	16.8	29.3	100mm
18	23	19.2	11	71.3	73.3	11.88	16.8	30.2	100mm
19	23.5	19.5	11.7	71.3	73	12	16.8	30.7	100mm
20	24.25	20	13.7	71.5	73	12.13	16.8	31.4	100mm
22	25	21	16	71.8	72.3	12.13	16.8	32.4	100mm

ADDITIONAL BICYCLE INFO VISIT : WWW.MOOTS.COM



VAMOOOTS									
FRAME SIZE [CM]	EFFECTIVE TOP TUBE [CM]	SEAT TUBE /c - T/ [CM]	HEAD TUBE LENGTH [CM]	HEAD ANGLE	SEAT ANGLE	BB DROP [CM]	CHAIN STAY LENGTH [CM]	STAND OVER [IN]	FRONT CENTER [CM]
47 (650c)	48.3	46	10.5	72	74.3	4.8	39.8	28.2	55.5
48.5	51.8	48.5	10	72.5	74.5	7.4	40.5	28.7	56.3
50	52.6	50	10.2	72.75	74.25	7.4	40.5	29.3	56.8
52	53.5	52	11	73	74.25	7.3	40.5	29.9	57.4
53.5	54.5	53.5	12.5	73.25	74	7.2	40.5	30.5	57.3
55	55.5	55	13.7	73.5	73.5	7.2	40.7	31	58
56	56.3	56	14.6	73.5	73.25	7.2	40.7	31.4	58.6
57.5	57	57.5	16	73.75	73	7.1	41	32	58.9
59	58	59	17.6	74	73	7	41	32.6	59.4
61.5	59.5	61.5	19.9	74.25	72.5	6.8	41.5	33.5	60.1



COMPACT									
FRAME SIZE [CM]	EFFECTIVE TOP TUBE [CM]	SEAT TUBE /c - T/ [CM]	HEAD TUBE LENGTH [CM]	HEAD ANGLE	SEAT ANGLE	BB DROP [CM]	CHAIN STAY LENGTH [CM]	STAND OVER [IN]	FRONT CENTER [CM]
50	52.6	47	10.2	72.75	74.25	7.4	40.5	28.8	56.8
52	53.5	48.5	11	73	74.25	7.3	40.5	29.2	57.4
53.5	54.5	50	12.5	73.25	74	7.2	40.5	29.8	57.3
55	55.5	51	13.7	73.5	73.5	7.2	40.7	30.2	58
56	56.3	52	14.6	73.5	73.25	7.2	40.7	30.5	58.6
57.5	57	53.5	16	73.75	73	7.1	41	31.1	58.9
59	58	55	17.6	74	73	7	41	31.8	59.4
61.5	59.5	57.5	19.9	74.25	72.5	6.8	41.5	32.6	60.1



PSYCHLO X + PSYCHLO X YBB									
FRAME SIZE [CM]	EFFECTIVE TOP TUBE [CM]	SEAT TUBE /c - T/ [CM]	HEAD TUBE LENGTH [CM]	HEAD ANGLE	SEAT ANGLE	BB DROP [CM]	CHAIN STAY LENGTH [CM]	STAND OVER [IN]	FRONT CENTER [CM]
50	52.5	48/ybb 50.5	10.2	72	74.5	6.3	42.3	29.3	56.9
52	53.8	52	11	72.25	74	6.3	42.3	30.5	58.1
53.5	55	53.5	12.5	72.5	73.5	6.1	42.3	31.3	59.4
55	56.3	55	13.7	72.75	73.25	6.1	42.3	31.8	59.9
56.5	57.6	56.5	14.6	73	73	6.1	42.3	32.5	60.7
58	58.8	58	15.5	73.25	73	6.1	42.3	33	61.5
60.5	60	60.5	17.6	73.25	72.5	6	42.3	33.8	61.9



MOOTOUR											
FRAME SIZE [CM]	EFFECTIVE TOP TUBE [CM]	SEAT TUBE /c - T/ [CM]	HEAD TUBE LENGTH [CM]	HEAD ANGLE	SEAT ANGLE	BB DROP [CM]	CHAIN STAY LENGTH [CM]	STAND OVER [IN]	FRONT CENTER [CM]	TOP TUBE SLOPE	INTENDED FORK
53.5	54	53.5	13.7	72.5	73.5	8	43	30.6	57.3	4.8	Long Reach
55	55	55	14.6	72.75	73.25	8	43	31.1	57.8	4.1	Long Reach
56	55.8	56	16	72.75	73	7.8	43	31.6	58	4.3	Long Reach
57.5	56.3	57.5	17.6	73	72.75	7.6	43	32.3	58.3	4.3	Long Reach
58	57.5	59	18.6	73	72.5	7.6	43	32.8	59.3	3.9	Long Reach



COMOOTER									
FRAME SIZE [CM]	EFFECTIVE TOP TUBE [CM]	SEAT TUBE /c - T/ [CM]	HEAD TUBE LENGTH [CM]	HEAD ANGLE	SEAT ANGLE	BB DROP [CM]	CHAIN STAY LENGTH [CM]	STAND OVER [IN]	INTENDED FORK
53.5	54	52	14.6	72	73.5	8	45	31.3	Cross/Disc
55	56	54	16	72	73.25	8	45	32	Cross/Disc
56.5	57	56	17.6	72.5	73	8	45	32.8	Cross/Disc
58	58	57	18.6	72.5	73	8	45	33.3	Cross/Disc



Additions:

ALL MTB: Some frame size/fork make/model combinations may cause DT to fork interference.

MXz: 16.5" frame comes standard with curved top tube for greater stand-over. Rear shock eye to eye is 7.5" for 16" and 18" frames and 7.875" for 19-22" frames. Stroke is 2" for all and recommended sag is 25%.

MootoX YBB/ Mooto X Rigor/YBB/Rigormootis: Designed for use with 160mm max disc brake rotors. Designed for use with Shimano 50mm chainline cranksets using 22/32/42 gearing.

Zirkel: Rear shock is eye to eye 7.5" with a 2" stroke. Recommended sag is 25%.

Vamoots/Compact: Options include 42cm chainstays, S&S couplers, Track Dropouts.

Psychlo X: Redesigned chainstays allow use of Shimano cranks with 43.5 mm chain line. Options include S&S couplers and Slider dropouts.



IT'S MORE THAN JUST THE RIDE:Moots has long been an advocate of operating our business responsibly. Among the many things we practice on a consistent basis are: **Recycling:** 100% part-offs and material waste recycling and complete paper and plastics recycling. **Commuting Program:** Every employee gets \$1 per day for commuting to Moots. The majority of that money is distributed to charities of the company's choice. **Local advocacy:** Moots supports numerous local charitable organizations and events by donating frames as auction items. In recognition of our efforts, we have been awarded by the City of Steamboat Springs with the Gold Certificate which is its highest level of excellence for responsible corporate stewardship.

Aftermarket Products Warning - Moots designs and builds high-end customized bicycles to exacting specifications. Moots does not test components made by other manufacturers to determine compatibility or safety when used in combination with Moots' bicycles or components. Moots' bicycles may not be compatible with all third-party products or accessories. Customer assumes all risks associated with the use of third-party products with Moots' bicycles or components. Moots, its agents, employees, and owners shall have no liability for any personal injury, disease, death, property damage or loss sustained or caused as a result of any Customer's use of third-party products with Moots' bicycles or components.





Mr. Moots

And, about this alligator...The alligator's origins go all the way back to Moots' founder Kent's grade school days. His favorite pencil top eraser was a loveable, smiling alligator character that accompanied him throughout his school days. One day, while sitting bored in class, he began to squish his mouth together as if encouraging him to speak. Lo and behold, out of his mouth came a faint cry of "Moots, Moots, Moots..." From that day on, his pencil top buddy had a name, Mr. Moots. Mr. Moots took on a life of his own when off the pencil top, appearing in numerous comic strip sketches partaking in many outdoor journeys including skiing, camping, hiking and of course, cycling. So, twenty seven years ago when it came time to name the bike company that introduced to the world one of the first true mountain bikes, the choice was obvious...Moots. We hope you will consider joining Mr. Moots for a lifetime of cycling adventures.



Moots[™]
 2545 Copper Ridge Dr
 Steamboat Springs, CO. 80487
 Phone 970-879-1676
 Fax 970-879-3067
 Web www.moots.com
 Email info@moots.com
 ©2008 Moots Cycles